

# The Nemadji/Lower Saint Louis River Initiative

## Fact Sheet



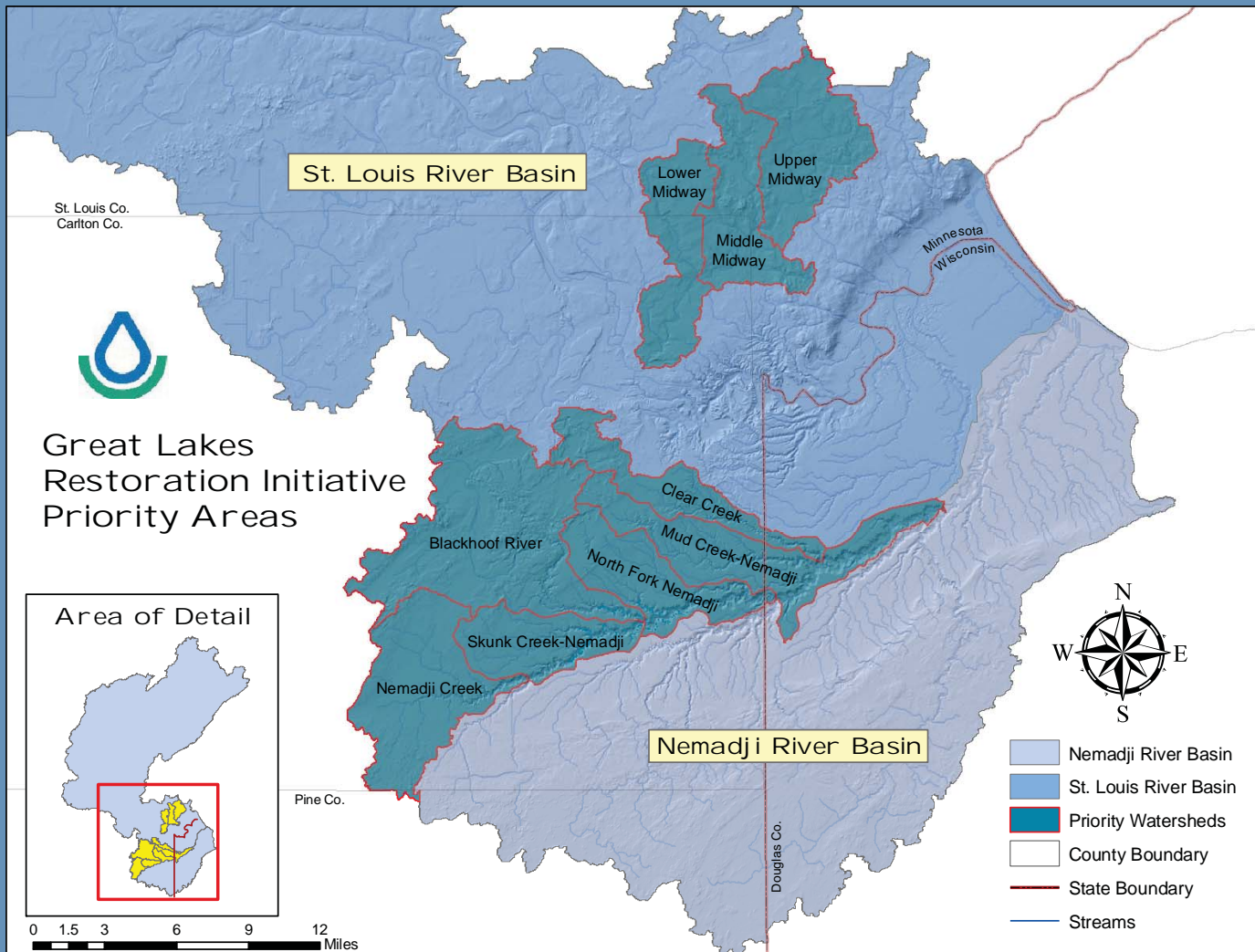
Photo: Duluth News Tribune.  
Reprinted with permission of the Duluth News Tribune.

### HELP CLEAR THIS UP!

Imagine thirty-six 10 cubic yard dump trucks dumping soil into the Harbor and Lake Superior each day. The Nemadji River delivers this amount each day 365 days a year on average.

We can reduce this load by working together. We know what to do and where to do it. We invite you to work with us. Be a part of the solution. **We need to plant trees!**

The Nemadji/Lower Saint Louis River Initiative has funds for eligible landowners to complete tree plantings. Call the NRCS office at (218) 720-5209 x3. The program application period is now open.



## What can you do?



### *Tree Planting Along Streams (left)*

Planting trees in open areas beside our streams will improve water quality and fish habitat. Trees stabilize banks, reduce soil erosion and provide cooling shade trout need. Planting long lived native trees such as white pine and white cedar will benefit fish and water quality for hundreds of years to come. Nemadji/Lower Saint Louis River Initiative funds will help pay for fencing to protect the trees from deer predation and ensure establishment.



### *Tree Planting in Open Areas (right)*

Fields that were once cropped or grazed and now out of production can be returned to forest cover. The trees when mature will slow snowmelt and rainfall run off. The streams will flow lower and longer, producing far better fish habitat and far less bank erosion. **The reforestation of old fields is the single best practice landowners can apply.**

## More Information

Many additional conservation practices are eligible for funding through this program, call the NRCS office at (218) 720-5209 x3 for more information on how to get started,

This project is part of the Great Lakes Restoration Initiative (GLRI). This initiative is taking important steps to provide clean water and a healthier environment for more than 40 million people who rely on the Great Lakes for their drinking water, shipping and recreation.

USDA is focused on improving essential watersheds to restore our natural resources, strengthen America's communities, and leave a healthier planet for our children.

USDA in Minnesota has received an allocation of \$249,000 for work on the portions of the Nemadji and Midway watersheds selected. The Natural Resources Conservation Service will deliver this funding to eligible landowners through the Environmental Quality Incentives Program (EQIP), the Wildlife Habitat Incentives Program (WHIP).

For more information about GLRI, visit your local **USDA Service Center**, or check on the Minnesota NRCS web site at [www.mn.usda.gov](http://www.mn.usda.gov).

## Partners

- \* **Board of Soil and Water Resources**
- \* **Minnesota Department of Natural Resources**
- \* **Minnesota Pollution Control Agency**
- \* **Soil and Water Conservation Districts-Carlton and South St. Louis**
- \* **St. Louis River Alliance**
- \* **US Environmental Protection Agency**
- \* **USDA, Natural Resources Conservation Service**

USDA Is An Equal Opportunity Provider and Employer